



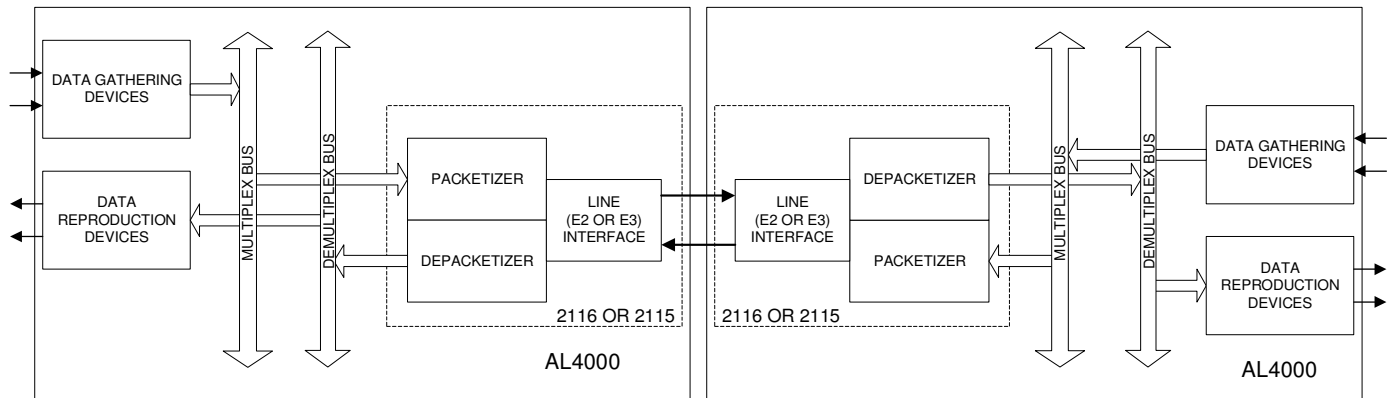
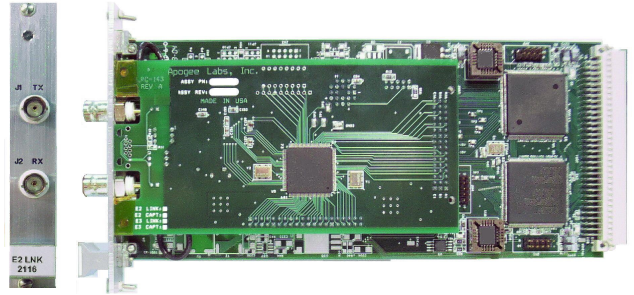
TECHNICAL NOTE

AL4300 PRODUCT LINE

MODEL 2116 / 2115 E2LNK / E3LNK
PACKETIZER / DEPACKETIZER
WITH
E2 / E3 DATA LINK INTERFACE

The E2LNK and E3LNK modules combine the functions of a full-duplex data link interface and a packetizer and depacketizer for the Apogee Labs AL4300 series of multiplex / demultiplex systems.

Model 2116 E2LNK and 2115 E3LNK modules control the transmission of data from one system to another in the same manner as the standard Apogee Labs packetizer and depacketizer. The intersystem data path is supported by a daughter card, mounted to the main or mother card, which implements an unchannelized E2 or E3 interface structure. The interface type is automatically detected.



These interfaces are designed as point-to-point data-link packetizer and depacketizer devices. The E2LNK and E3LNK modules support system configurations where it is necessary to share data between system nodes that are separated by cable distances of up to 1300 feet.

SPECIFICATIONS

- Incorporates Packetizer and Depacketizer
- Generates / Collects Composite Transfer Frames
- Multiplexes / Demultiplexes Source Packets from and to Application Modules
- Supports 1 ms or 10 ms Sample Interval
- Equalization Control for Cable Lengths to 1300 Ft.
- Data Code Violation Detection
- HDB3 Data Coding
- 8448 kbps (E2) or 34368 kbps (E3) Line Rates
- Line Quality Monitor
- Receive Loss of Signal Detection
- G.703 Wave-shape Mask
- G.823 Jitter Requirement
- Transfer Frame Format: 8192 bits / Frame, CCSDS Packet Telemetry Format with Attached Synchronization Pattern

APOGEE LABS, INC.

210 South Third Street
North Wales, PA 19454

Phone: 215.699.2060

Fax: 215.699.2061

Email: sales@apogeelabs.com

Internet: www.apogeelabs.com